



London Road, East Sussex, TN39 4AJ

£250,000

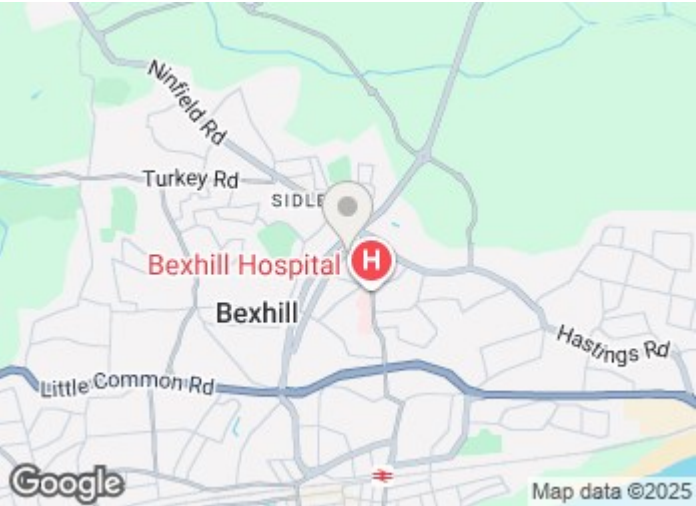
This three-bedroom mid-terrace house offers an ideal investment opportunity, benefiting from long term tenants. This property features a spacious living area, a separate kitchen, two double bedrooms and one single bedroom. Externally, the property offers a rear garden and a private driveway. Please call Maltbys for more information on 01424 730678

London Road, East Sussex, TN39 4AJ

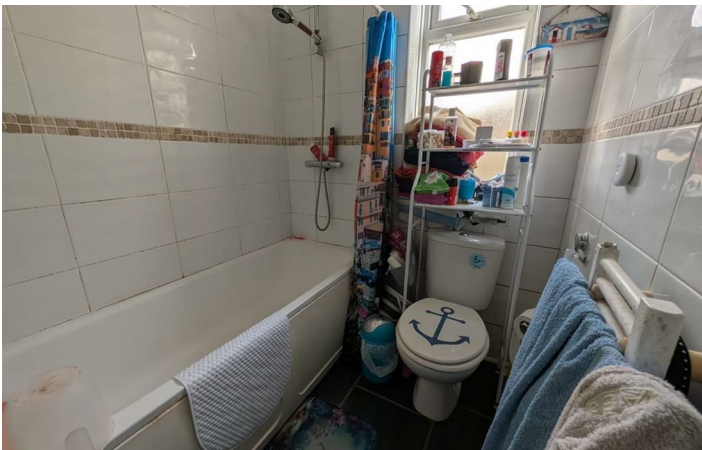
£250,000



- 3 Bedroom House
- EPC Rating: D
- Tenants in Situ
- Double Glazed
- Private Driveway
- Gas Central Heating

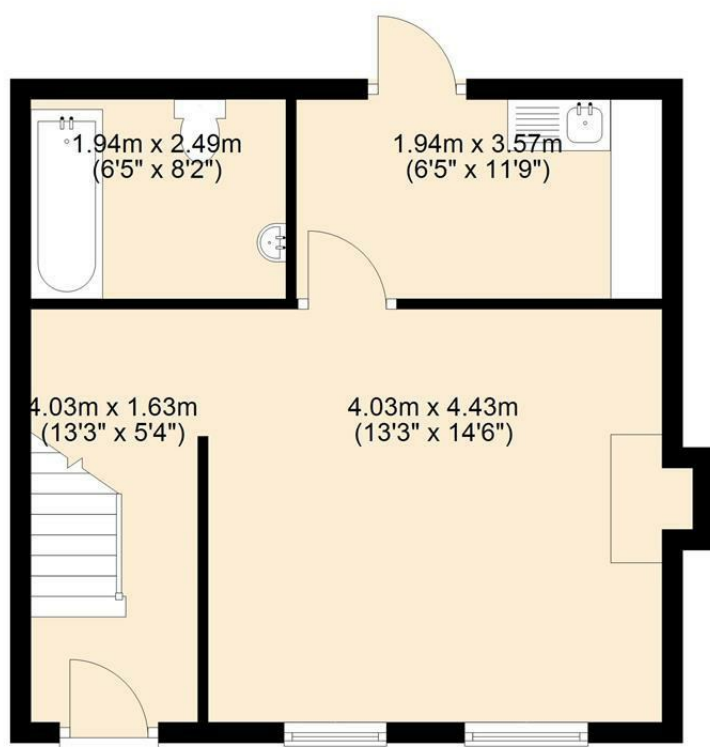


Directions



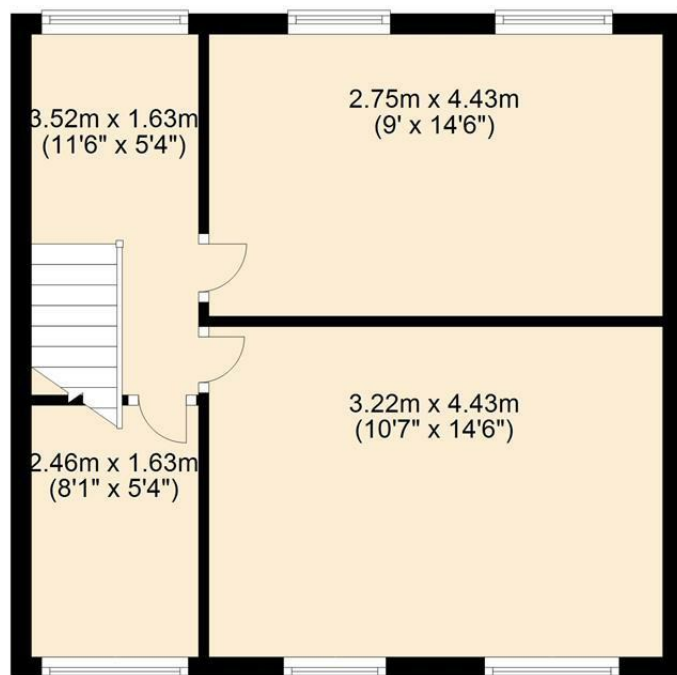
Ground Floor

Approx. 37.4 sq. metres (402.5 sq. feet)

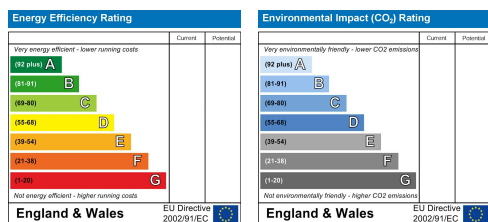


First Floor

Approx. 37.4 sq. metres (402.5 sq. feet)



Total area: approx. 74.8 sq. metres (805.0 sq. feet)



These particulars, whilst believed to be accurate are set out as a general outline only for guidance and do not constitute any part of an offer or contract. Intending purchasers should not rely on them as statements of representation of fact, but must satisfy themselves by inspection or otherwise as to their accuracy. No person in this firm's employment has the authority to make or give any representation or warranty in respect of the property.

57 St Leonards Road, Bexhill-On-Sea, TN40 1JA

Tel: 01424 730678 | Email: info@maltbys.uk

www.maltbys.uk